

**Wayne Hemingway, founder of the hugely influential Red or Dead fashion label,  
and the School of Art & Design, University of Wolverhampton  
Request the pleasure of your company at**

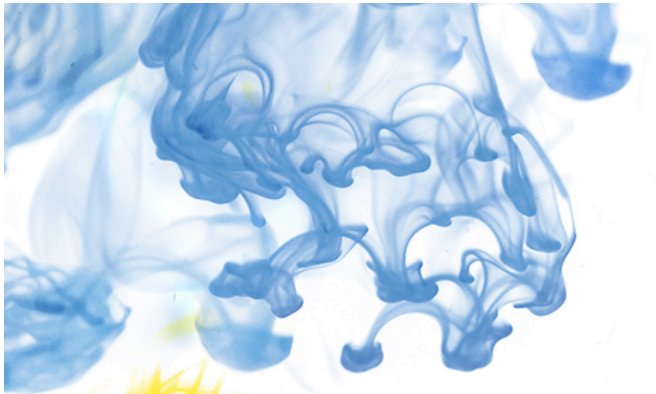
**Exploring the Land of Lost Content  
the launch of the website ([www.lolc.co.uk](http://www.lolc.co.uk))**

The School of Art & Design has been working in collaboration with designer Wayne Hemingway and museum owner Stella Mitchell in a project that celebrates their collections of popular culture artefacts.  
The project has been set up to electronically archive these items to create a searchable database for design inspiration.

**Wednesday 6<sup>th</sup> December 2006**

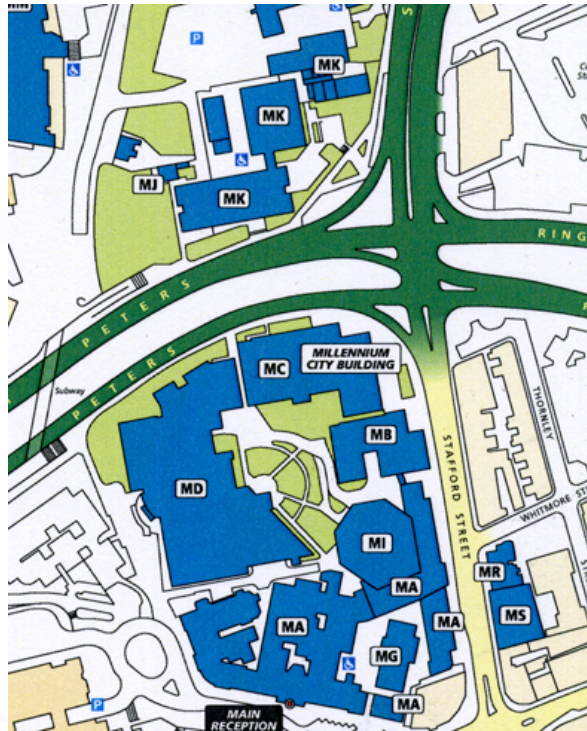
**At the School of Art & Design, University of Wolverhampton  
10:00 am - 2:00 pm**

RSVP: [art-design@wlv.ac.uk](mailto:art-design@wlv.ac.uk) or telephone [\(01902\) 322058](tel:01902322058)  
School of Art & Design, University of Wolverhampton, Molineux Street, Wolverhampton, WV1 1SB



# School of Art&Design

School of Art &  
Design,  
University of  
Wolverhampton,  
Molineux Street,  
Wolverhampton,  
WV1 1SB



Campus Map



University Map